

ON-LINE LIQUID EFFLUENT MONITOR - ONLEM



FAST INDICATION OF GENUINE RELEASES THROUGH ADVANCE ALARM ALGORITHM

UNIQUE LEAD DESIGN FACILITATES HASSLE FREE INSTALLATION

NaI AND CsI DETECTOR OPTIONS ALLOWS THE SELECTION OF THE RIGHT DETECTOR FOR YOUR APPLICATION

VERSATILE DESIGN FOR BOTH HORIZONTAL AND VERTICAL PIPE RUNS

HIGH SAFETY INTEGRITY (OPTIONAL SSM BOARD PROVIDES HIGH INTEGRITY REDUNDANCY CIRCUIT)

Ultra Electronics - Lab Impex Systems On-line Liquid Effluent Monitor (OLEM) has been developed to continuously measure radioactive gamma emitting isotopes in process lines.

EASY INSTALLATION

The OLEM system includes lead shielding, detector and electronics. The detector and shield assembly is totally non-invasive to the process line, and there is no need for a pumping system or tap-off points for sample removal and return.

The 'clamp-on' arrangement of the OLEM system also makes it easy to install. The shielding can be mounted horizontally or vertically to accommodate process pipe runs, and a mounting plinth may be supplied to raise the OLEM above the floor line if necessary.

HIGH EFFICIENCY

The OLEM can be configured to measure gross gamma radiation, or isotopic specific radiation in the process line. A high efficiency NaI(Tl) (or CsI) detector (sized depending on the diameter of the process line), is used to take the measurement. The detector is optionally temperature stabilized and can also possess an in-built radioactive pulser that allows the user to perform routine performance checks on the system.

CMS DIGITAL RATEMETER

The standard OLEM shielding solution uses 2 inches of lead around the detector and pipe to minimize interference from background, although alternative shielding assemblies are available, and if required the system may be furnished with an optional cooling jacket for high temperature process applications.

After amplification and pulse shaping, the detector signal is transmitted to a CMS Continuous Monitoring Station. The CMS is an advanced digital ratemeter providing a continuously updating display of result values and generating audible-visual alarm indication in the event of an activity alarm or system fail.

LOW DETECTABLE LIMIT

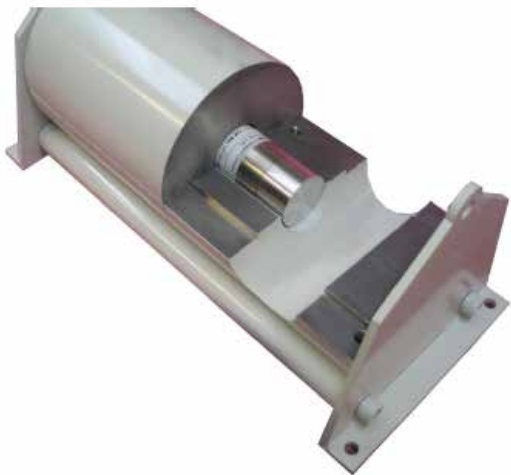
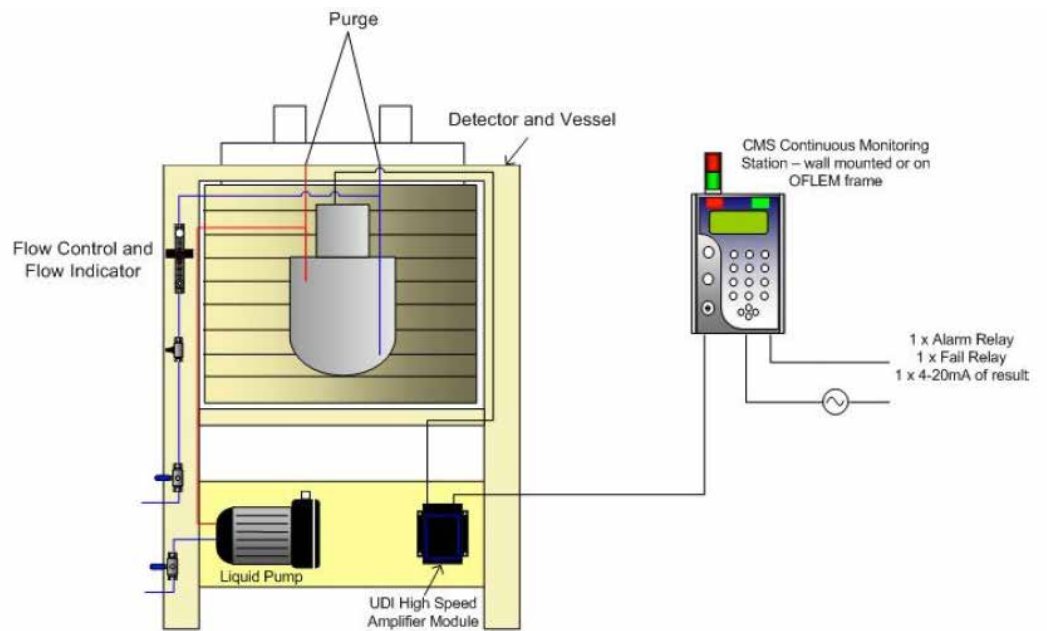
The CMS Continuous Monitoring Station can be configured to report in raw count-rate (cps or cpm) or engineered units (i.e. $\mu\text{Ci/ml}$). Under typical conditions and using a 60 second count time the OLEM offers an MDA of well below $1 \times 10^{-6} \mu\text{Ci/ml}$.

"THE INNOVATIVE LEAD SHIELDING DESIGN OF THE OLEM MAKES INSTALLATION AND MOUNTING OF THE SYSTEM EXTREMELY EASY"

HIGH SAFETY INTEGRITY

As an added benefit, the CMS Continuous Monitoring Station can be provided with additional hardware for high safety integrity. This hardware, called the SSM* (SIL Safety Module) conforms to Safety Integrity Level 2 (SIL2) in accordance with the IEC 61508 standard. The SSM independently monitors the detector output with a simple and separate scaler circuit. Detector counts are evaluated in this way, and the SSM will activate alarms in the event of a high detector count. No software is used with the SSM and each component on the circuit has been evaluated for potential failure mode and effects analysis. Although the SSM is resident within the CMS, the board is fully isolated and possesses its own power supply, power backup and output relays for driving audio and visual alarms and interlocks.

More information on the SSM module available on request.



By offering users SIL2, the OLEM gives added protection over conventional systems. The SSM provides a safeguard in the event the main CMS processor fails and reduces the overall risk of fail to alarm' scenarios. This is especially important when a failure of the system could indirectly expose people, the process or equipment to radiological or other hazardous conditions.



DETECTOR ASSEMBLY

PERFORMANCE SPECIFICATION

Detector Type	Nal(Tl) or CsI, depending on application. Crystal size selected to suit
Shielding	2" to 4" as required
Pipe Size	Can accommodate 1" to 12" diameter pipework
Measuring Range	$<1 \times 10^{-6}$ $\mu\text{Ci/ml}$ - 1×10^{-1} $\mu\text{Ci/ml}$
Temperature Range	0°C to 50°C (32°F - 122°F) Ramp Rate (Max) - 2°C / hr
Shield Dimensions	8" x 8" x 16" (2" shield)
Calibration / Check Source	Stick mounted for manual check. Optional solenoid operated automatic source

CMS GAMMA

PERFORMANCE SPECIFICATION

Dimensions	18" x 8" x 5½"
Enclosure	304 Stainless Steel
Display	Large LCD graphic display with backlight
Alarm Indication	<ul style="list-style-type: none"> • Two layer status light column (Totem Pole, Red + Green LED) • Audible alarm sounder: 2 tones alternating at 1.2Hz > 100dB
System Outputs	<ul style="list-style-type: none"> • Up to four relay outputs (Alarm1, Alarm2, Alarm3 and Fault) • RS-232 • RS-485 • 2 x analogue outputs • Ethernet 10baseT
Electrical	<ul style="list-style-type: none"> • 85 to 260 VAC • 47 to 60 Hz



making a difference

Ultra Electronics

NUCLEAR CONTROL SYSTEMS
Innovation House, Lancaster Road
Ferndown Industrial Estate
Wimborne, Dorset BH21 7SQ, England
Tel: +44 1202 850450
Fax: +44 1202 850451
Email: information@ultra-ncs.com
www.ultra-ncs.com
www.ultra-electronics.com

Ultra Electronics reserves the right to
vary these specifications without notice.
© Ultra Electronics Limited 2016.
Produced in England
UENCS-L254C